

SYMBIOTE
SEATING CATALOG 2025





THIS PAGE LEFT BLANK

TABLE OF CONTENTS

- 1 Overview
 - 2 Warranty
 - 3 Surface Materials
 - 4 Chairs
-

SYMBIOTE SEATING

Symbiote Seating has almost Nine Thousand chair combinations that will work in specific healthcare, laboratory, educational, and general work spaces. On top of that, we also offer chairs specific for clean room environments and areas where Electrostatic Discharge is needed.

QUOTES AND PRICING

Symbiote quotes include product specifications with drawings and component parts. U.S. pricing is available from your sales representative or Symbiote.

ORDERING

Please order products by using the complete product number. Specify quantity, the product number, description, finish option and any other specifying information. When ordering custom products, include the quote number and special product number provided by Symbiote. Purchase Orders can be submitted electronically to projectoperations@symbiote.com; fax to 616.772.1798; or send by conventional mail to 300 N. Centennial Street, Zeeland, MI 49464.

NOTE

This catalog serves as a general guide for ordering. The illustrations are typical and may not be a true depiction of each product. The illustrations and descriptions are based on the latest information available at the time of publication. All dimensions listed are nominal. Symbiote reserves the right to make changes at any time without notice to finishes, materials and specifications and also to discontinue finishes and products.

Change Date	Pages	Description of Catalog Revision
06.26.25	2.1-2.2	Revised warranty and payment term details

DIMENSIONS

	Seat			Back			Overall			Ship
	Height	Width	Depth	Height	Width	Ht. Adjust	Height	Width	Depth	Weight (lbs.)
Poly Chair										
SPC100C	16.25"-21.5"	16"	17"	10.25"	15.5"	6"	26.5"-37.75"	26"	26"	31
SPC200C	19.25"-26.75"	16"	17"	10.25"	15.5"	6"	29.5"-43"	26"	26"	34
SPC300C	23.25"-33.25"	16"	17"	10.25"	15.5"	6"	33.5"-49.5"	26"	26"	36
Vinyl Chair										
SVC100C	18"-23"	18.5"	17"	11.5"	16.5"	5"	29.5"-39.5"	26"	26"	31
SVC200C	21"-28.25"	18.5"	17"	11.5"	16.5"	5"	32.5"-44.75"	26"	26"	34
SVC300C	25"-34.5"	18.5"	17"	11.5"	16.5"	5"	36.5"-51"	26"	26"	36
Vinyl Stool										
SVS100C	17.25"-22.5"	17"	17"	n/a	n/a	n/a	17.25"-22.5"	25"	25"	25
SVS200C	19.75"-27.25"	17"	17"	n/a	n/a	n/a	19.75"-27.25"	25"	25"	28
SVS300C	24.5"-34.5"	17"	17"	n/a	n/a	n/a	24.5"-34.5"	25"	25"	30
Vinyl Stool with Back										
SVSC100C	18"-23"	17"	17"	11.5"	16.5"	5"	29.5"-39.5"	26"	26"	31
SVSC200C	20.75"-28.75"	17"	17"	11.5"	16.5"	5"	32.25"-45.25"	26"	26"	34
SVSC300C	25"-35"	17"	17"	11.5"	16.5"	5"	36.5"-51.5"	26"	26"	36
Clean Room Chair										
SCRPC100C	17.5"-22.75"	16"	17"	10.25"	15.5"	6"	27.75"-39"	27"	27"	31
SCRPC200C	20.25"-28"	16"	17"	10.25"	15.5"	6"	30.5"-44.25"	27"	27"	34
SCRPC300C	24.5"-34.75"	16"	17"	10.25"	15.5"	6"	34.75"-51"	27"	27"	36
ESD Chair										
SESDVC100CBK	19"-24"	18.5"	17"	11.5"	16.5"	5"	30.5"-40.5"	27"	27"	31
SESDVC200CBK	21.5"-29"	18.5"	17"	11.5"	16.5"	5"	33"-45.5"	27"	27"	34
SESDVC300CBK	26.25"-36"	18.5"	17"	11.5"	16.5"	5"	37.75"-52.5"	27"	27"	36

WARRANTY INFORMATION

SEATING

Symbiote Inc warrants its seating products against defects in material and workmanship for 15 (fifteen) full years. Lifetime on all pneumatic lifts, 5 (five) years on upholstery.

Symbiote Inc warrants its metal and wooden stools against defects in materials and workmanship for 3 (three) full years. Symbiote Inc warrants its mesh office chairs and mesh guest chairs against defects in materials and workmanship for 5 (five) full years, lifetime on all pneumatic lifts, 5 (five) years on upholstery. This warranty does not apply to damage resulting from shipment, storage, alteration, misuse or normal wear.

WARRANTY PERIODS

- 15 years, Seating, unlimited on the pneumatic cylinder
- 12 years, Standard Products
- 5 years, Electric Height Adjustable Tables
- 2 years, Task Lighting
- 1 year, ESD Laminate
- 1 year, Special / Custom Product

Pass-Through Products - manufacturer's warranty

WARRANTY CONDITIONS

Symbiote Inc warrants its products to be free from defects in material and workmanship from the date of their original purchase, for normal commercial use and for the applicable warranty period specified. The Symbiote Inc warranty extends only to original purchasers acquiring new products for commercial use directly from Symbiote Inc, its authorized dealers, or others specifically authorized by Symbiote Inc to sell its products.

The warranty does not apply to damage caused by the carrier; customer modification of product; attachments to a product; non-standard materials selected by and used at the request of a customer; or products which are not installed or used in accordance with the Symbiote Inc published instructions.

Symbiote Inc's obligation and the purchaser's sole remedy under this warranty are limited as follows: repair or replacement, at the company's option, F.O.B. its plant.

Purchasers may be required to establish that a claim is within the warranty period by producing the invoice for the product or other proof of purchase which is reasonably satisfactory to Symbiote Inc. Symbiote Inc makes no warranty to purchasers who acquire products for personal, family, or household purposes. No person, firm, or corporation is authorized to assume for Symbiote Inc any liability in connection with the sale or installation of the Symbiote Inc products except as stated above. THERE ARE NO OTHER WARRANTIES EXCEPT AS EXPRESSLY SET FORTH ABOVE. EITHER EXPRESSED OR IMPLIED INCLUDING ANY WARRANTY OF MERCHANTABILITY OR FITNESS FOR ANY PARTICULAR PURPOSE. The remedies stated herein are expressly agreed to be exclusive as a condition of sale, and Symbiote Inc liability with respect to its products shall not exceed that expressly set forth above regardless of the theory upon which any claim might be based, including breach of contract, warranty, negligence, or strict liability in tort. Under no circumstances shall Symbiote Inc be liable for incidental or consequential damages.

CONTRACT TERMS

All quotations, proposals, or similar communications from Symbiote are considered “invitations to contract.” Any order placed by a customer must be in the form of a written purchase order and shall be considered an “offer.” A written acknowledgment of an order by Symbiote shall be considered an “acceptance” which, when mailed, emailed or faxed to the customer, shall then result in a binding sales contract of which these Contract Terms shall be a part. Acceptances may be made only at Symbiote’s home office in Zeeland, Michigan, and all sales contracts shall be made pursuant to and controlled by the laws of the State of Michigan. Notwithstanding any inconsistent or contrary term which may appear on a customer’s purchase order, Symbiote’s products are sold only upon these Contract Terms.

PRICES

Published pricing is U. S. dollars. Unless otherwise stated in Symbiote’s acknowledgment, all prices are F.O.B. Symbiote’s factory, Zeeland, Michigan, or F.O.B. Symbiote’s supplier or fulfillment location, as applicable, and do not include freight, storage, handling, uncrating or installation charges. Upon request Symbiote will provide estimated freight charges F.O.B. destination. Prices do not include sales, use, excise or any other taxes or assessments which may be applicable to the sale. Symbiote reserves the right to make changes in pricing without notice.

ORDERING INFORMATION

A minimum Deposit of 35% is required on all orders placed with SYMBIOTE, INC. for orders with a quoted list price of \$50,000 and higher. For orders above \$250,000 further discussions on the deposit amount will be needed, unless an active contract governing down payment is currently in place. Deposit is due at the time of order entry unless written consent is agreed upon in advance. Payment can be made via standard check or through ACH payment, information available upon request. All orders must be in writing to avoid error and/or duplication. Order all products by their complete product number. Specify quantity, product number, product description, finish option and any other specifying information requested. Submit orders via email, conventional mail or fax on your purchase order form. Acknowledgments are issued within five working days of acceptance of the order with an approximate ship date of the product ordered.

TAXES

In addition to the purchase price, the customer is liable for all sales, use and excise taxes and/or other governmental charges imposed in respect of the sale, delivery or installation of the products being purchased by the customer (except taxes on or measured by net income of Symbiote), including those which Symbiote may be required to pay, except where the law otherwise provides. Unless otherwise specified in Symbiote’s acknowledgment, the customer shall pay all such taxes directly to the appropriate taxing authorities.

PAYMENT

The payment terms contained in this paragraph apply only to customers whose credit has been approved by Symbiote. For purchases of standard products, Symbiote offers a one percent (1%) discount off the purchase price (excluding charges for freight, storage, handling, uncrating, installation and taxes) for full payments made in readily available funds (and not by credit card), within ten (10) days after the invoice date. All payments are due within thirty (30) days after the invoice date. For purchases of non-standard products, payment terms are fifty percent (50%) of the total purchase price deposited with the order in readily available funds and the total remaining purchase price ("Deferred Price") payable in readily available funds within thirty (30) days after the invoice date ("Final Invoice Date"). However, if the customer pays the entire Deferred Price and other amounts owing with respect to the non-standard products in readily available funds (and not by credit card) within ten (10) days after the Final Invoice Date, customer will be credited with a discount equal to one percent (1%) of the Deferred Price (excluding charges for freight, storage, handling, uncrating, installation and taxes). Beginning thirty (30) days after the invoice date, the customer shall pay a late payment charge of one and one-half percent (1.5%) per month on any unpaid portion of the purchase price shown on the invoice. Symbiote accepts Visa, Mastercard, and American Express credit cards as a payment option up to \$5,000. Credit card payments are subject to a 5% credit card surcharge. They are not considered "readily available funds" for purpose of the discounts described above. Symbiote reserves the right to revoke or modify these credit terms at any time. See Ordering information (Page 1.9) for down payment requirements.

RETENTION OF TITLE; SECURITY INTEREST

Symbiote shall retain title to the products, any replacements thereof, and any additions thereto, for purpose of securing payment of the purchase price and related charges. Title shall not pass to the customer until the purchase price and all sums due hereunder are fully paid. Symbiote is authorized to file a financing statement and other documents necessary to enable Symbiote to place third parties on notice of its title to the products.

SHIPMENT

Freight bills for orders shipped F.O.B. Zeeland, MI, or F.O.B. Symbiote's supplier or fulfillment location will be directly sent from the carrier to Purchaser for direct payment by Purchaser. Orders shipped F.O.B destination have freight included in the invoice. Special shipping costs, if specified by Purchaser, are the responsibility of Purchaser. Any shipping date shown on the acknowledgment represents Symbiote's best estimate as of the date of acknowledgment. However, Symbiote shall not incur any liability of any kind for failure to ship on any particular date unless a firm shipping date has been expressly agreed to by an officer of Symbiote in a separately signed written instrument. Responsibility for the product and risk of loss shall pass to Purchaser when the product is placed in the possession of a common carrier. Claims against the carrier shall be the responsibility of Purchaser. Claims against Symbiote for apparent defects, errors or shortages must be made in writing to Symbiote within thirty (30) days of receipt of the product, or such claims shall be considered waived and the product accepted as delivered. If Purchaser claims the product delivered is non-conforming, Purchaser shall afford Symbiote prompt and reasonable opportunity to inspect the product. Symbiote's liability for non-conforming product shall be limited to repair or replacement of such product or allowance of credit for such product, at Symbiote's option. If Symbiote and the customer are unable to reach settlement of any claim relating to product, the customer must institute legal action against Symbiote within one (1) year after such claim arises and thereafter all such claims shall be barred, notwithstanding any statutory period of limitations to the contrary.

SELECTION OF GOODS

The selection of particular models, styles, colors, fabrics and specifications of product and the suitability thereof for the customer's specific application are the sole responsibility of the customer.

DELAYS AND CHANGE ORDERS

After the date an order from the customer is acknowledged by Symbiote, the customer may not change the order, in whole or in part, without Symbiote's written approval. All changes must be requested in writing. Where a proposed change would necessitate delays in shipment, Symbiote may condition its approval upon a price change to reflect Symbiote's prevailing prices at the time of such delayed shipment. Orders for non-standard products, including without limitation products with nonstandard finishes, are not subject to change.

Symbiote is not responsible for delays in shipment due to customer-requested changes to an order.

STORAGE

If the customer requests a delay in shipment after the product has become work in process, Symbiote may place the finished product in storage at the customer's risk and expense, and transfer to storage shall be considered delivery for all purposes, including invoicing and payment.

CANCELLATION

After the date an order from the customer is acknowledged by Symbiote, the customer may not cancel the order without Symbiote's written approval. All cancellations must be requested in writing. Symbiote's approval of cancellation shall be conditioned on the customer's payment of a cancellation charge of fifteen percent (15%) of the total purchase price and reimbursement of costs incurred by Symbiote prior to such approval, including engineering, testing, material costs, labor and burden and similar expenses in connection with the order cancelled. Orders for non-standard products, including without limitation products with nonstandard finishes, are not subject to cancellation.

RETURNS

The customer may not return product without Symbiote's written approval. Returns must be requested within 90 days of the original shipment. Symbiote's approval of returns shall be conditioned on the product being returned to Symbiote (i) in compliance with Symbiote's shipping instructions, (ii) within 90 days of the issuance of Symbiote's RGA (Returned Goods Authorization) number, (iii) with all return shipping charges being prepaid by customer, (iv) in a suitable condition for resale, and (v) with the customer's payment of a restocking charge of fifteen percent (15%) of the total purchase price. Symbiote will charge the customer for repairs to returned product at customary rates. Non-standard products, including without limitation, products with nonstandard finishes, are not subject to return.

DAMAGE LIMITATION

The liability of Symbiote arising out of the sale or use of the product, whether based on negligence, breach of contract, strict liability or otherwise, shall not in any event exceed the original purchase price of the product. Under no circumstances shall Symbiote be liable for any lost profits or any incidental or consequential damages of any kind with respect to its products or the transactions by which its products are sold.

EXCUSE

In no event shall Symbiote be liable for any loss or damage resulting from any delay or failure in shipment or other failure to perform with respect to the products where such delay, failure, loss or damage is the proximate result of any act of any governmental authority, revolution, riot, civil disorder or disturbance, act of enemies, delay or default in transportation, strike, dispute among or between labor unions or other labor disputes, inability to obtain materials or facilities from normal sources, fire, flood, act of God or any cause not within the reasonable control of Symbiote, whether of the class of causes enumerated or otherwise. Without limiting the generality of the foregoing, Symbiote may, without causing a breach or incurring liability, allocate products which are in short supply for any reason among customers in any manner which Symbiote in its sole discretion considers advisable.

MODIFICATION

These contract terms can be modified only by a written instrument signed by Symbiote.

INFRINGEMENT

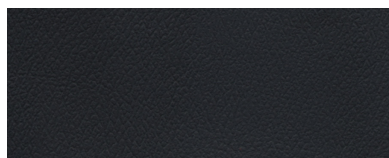
If any product sold by Symbiote is to be manufactured according to the customer's specifications, the customer shall indemnify Symbiote against any claims or liability for patent or trademark infringement on account of such manufacture.

Online or printed samples may vary depending on your monitor and printer. To request an actual sample please contact your sales representative.

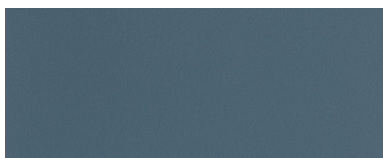
SEATING VINYL

Grade 1

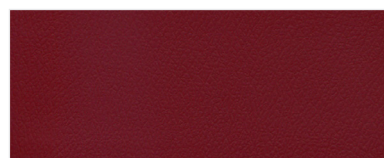
Our everyday workhorse vinyl has a finish that protects against abrasions and is non-porous to defend against spills.



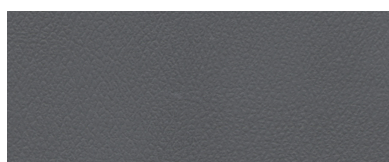
Black



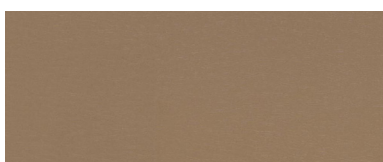
Blue



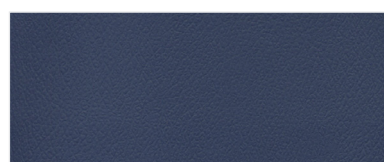
Burgundy



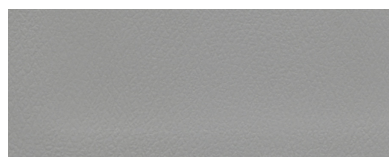
Charcoal



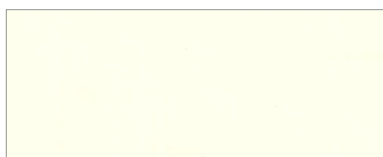
Taupe



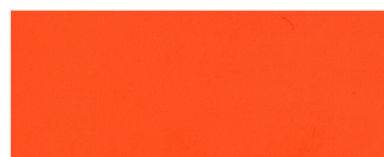
Navy



Dove



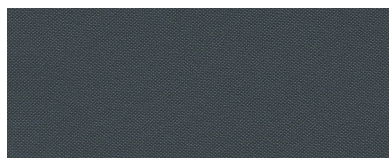
Adobe



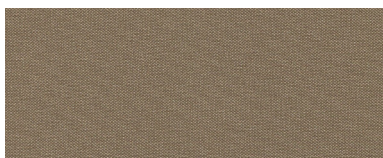
Orange Kist

Grade 2

Our highest-grade vinyl has a unique texture, and an antibacterial additive, yet remains non-porous and ideal for harsh settings.



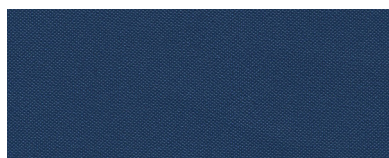
Storm



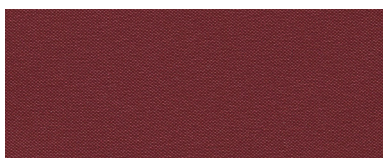
Taupe



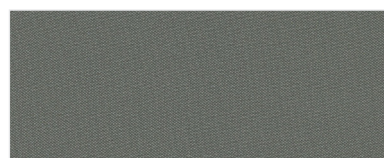
Carbon



Marine

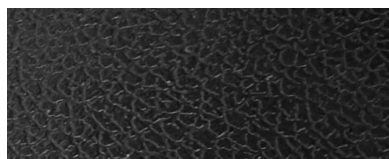


Borscht

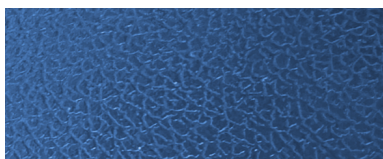


Sterling

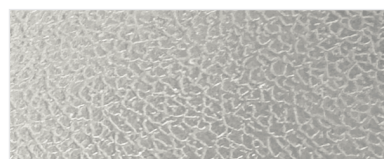
POLYURETHANE COLORS



Black Polyurethane



Blue Polyurethane



Gray Polyurethane

Poly Seat with Back



Comes Standard With:

- Back Height Adjustment
- Locking Back Tilt
- Nylon Reinforced Fiberglass Base
- Black dual-wheel, self-braking, non-marring casters
- 300lb Weight Capacity

Additional Options

Back Styles



Stool



Large Back Chair



Handle Back Chair

Base Styles



Chrome Base



Round Tube Base

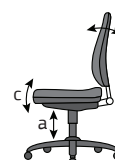
Functional Options



Glides



Arms



Seat Tilt Mech

- a) Pneumatic seat height adjustment
- b) Back angle adjustment
- c) Forward seat tilt angle

Desk Height

SPC100CBL Blue Polyurethane Seat and Back

SPC100CBK Black Polyurethane Seat and Back

- 5.25" of seat height adjustment



SPC100CBK

Medium Bench Height

SPC200CBL Blue Polyurethane Seat and Back

SPC200CBK Black Polyurethane Seat and Back

- 7.5" of seat height adjustment
- Chrome adjustable foot ring w/ internal lock



SPC200CBL

High Bench Height

SPC300CBL Blue Polyurethane Seat and Back

SPC300CBK Black Polyurethane Seat and Back

- 10" of seat height adjustment
- Chrome adjustable foot ring w/ internal lock



SPC300CBK

Vinyl Seat with Back



SVC100CBK

Comes Standard With:

- Back Height Adjustment
- Locking Back Tilt
- Nylon Reinforced Fiberglass Base
- Black dual-wheel, self-braking, non-marring casters
- Antibacterial/Antifungal Vinyl
- 300lb Weight Capacity

Additional Options

Back Styles



Large Back Chair

Base Styles



Chrome Base



Round Tube Base

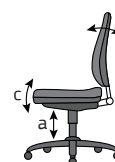
Functional Options



Glides



Arms



Seat Tilt Mech

- a) Pneumatic seat height adjustment
- b) Back angle adjustment
- c) Forward seat tilt angle

Desk Height

SVC100CNV Navy Vinyl upholstered seat and back over foam cushions

SVC100CBK Black Vinyl upholstered seat and back over foam cushions

- 5" of seat height adjustment



SVC100CNV

Medium Bench Height

SVC200CNV Navy Vinyl upholstered seat and back over foam cushions

SVC200CBK Black Vinyl upholstered seat and back over foam cushions

- 7.25" of seat height adjustment
- Chrome adjustable foot ring w/ internal lock



SVC200CBK

High Bench Height

SVC300CNV Navy Vinyl upholstered seat and back over foam cushions

SVC300CBK Black Vinyl upholstered seat and back over foam cushions

- 9.5" of seat height adjustment
- Chrome adjustable foot ring w/ internal lock



SVC300CNV

Vinyl Stool no Back

Comes Standard With:

- Nylon Reinforced Fiberglass Base
- Black dual-wheel, self-braking, non-marring casters
- 360 degree all around control
- 17" Diameter Seat, 3.5" thick
- Antibacterial/Antifungal Vinyl
- 300lb Weight Capacity



Additional Options

Base Styles



Chrome Base



Round Tube Base

Functional Options



Glides

Desk Height

SVS100CNV Navy Vinyl upholstered seat over foam cushion

SVS100CBK Black Vinyl upholstered seat over foam cushion

- 5.25" of seat height adjustment



Medium Bench Height

SVS200CNV Navy Vinyl upholstered seat over foam cushion

SVS200CBK Black Vinyl upholstered seat over foam cushion

- 7.5" of seat height adjustment
- Chrome adjustable foot ring w/ lock



High Bench Height

SVS300CNV Navy Vinyl upholstered seat over foam cushion

SVS300CBK Black Vinyl upholstered seat over foam cushion

- 10" of seat height adjustment
- Chrome adjustable foot ring w/ internal lock



Vinyl Stool with Back



Comes Standard With:

- Back Height Adjustment
- Locking Back Tilt
- Nylon Reinforced Fiberglass Base
- Black dual-wheel, self-braking, non-marring casters
- 360 degree all around control
- 17" Diameter Seat, 3.5" thick
- Antibacterial/Antifungal Vinyl
- 300lb Weight Capacity

Additional Options

Base Styles



Chrome Base



Round Tube Base

Functional Options



Glides



Seat Tilt Mech

- a) Pneumatic seat height adjustment
- b) Back angle adjustment
- c) Forward seat tilt angle

Desk Height

SVSC100CNV Navy Vinyl upholstered seat and back over foam cushions

SVSC100CBK Black Vinyl upholstered seat and back over foam cushions

- 5" of seat height adjustment



SVSC100CNV

Medium Bench Height

SVSC200CNV Navy Vinyl upholstered seat and back over foam cushions

SVSC200CBK Black Vinyl upholstered seat and back over foam cushions

- 8" of seat height adjustment
- Chrome adjustable foot ring w/ internal lock



SVSC200CBK

High Bench Height

SVSC300CNV Navy Vinyl upholstered seat and back over foam cushions

SVSC300CBK Black Vinyl upholstered seat and back over foam cushions

- 10" of seat height adjustment
- Chrome adjustable foot ring w/ internal lock



SVSC300CNV

Clean Room Chairs – Poly Seat and Back



SCRPC100CBL

Comes Standard With:

- Certified for ISO Class 4, Clean Room Class 10 standards
- Back Height Adjustment
- Locking Back Tilt
- Polished Cast Aluminum Base
- Chrome-hooded dual-wheel, self-braking, non-marring casters
- 300lb Weight Capacity

Additional Options

Back Styles



Stool



Large Back Chair

Functional Options



Glides

Desk Height

SCRPC100CBL Blue Polyurethane Seat and Back

SCRPC100CBK Black Polyurethane Seat and Back

- 5.25" of seat height adjustment



Medium Bench Height

SCRPC200CBL Blue Polyurethane Seat and Back

SCRPC200CBK Black Polyurethane Seat and Back

- 7.75" of seat height adjustment
- Chrome adjustable foot ring w/ internal lock



High Bench Height

SCRPC300CBL Blue Polyurethane Seat and Back

SCRPC300CBK Black Polyurethane Seat and Back

- 10.25" of seat height adjustment
- Chrome adjustable foot ring w/ internal lock



ESD Chairs – Vinyl Seat and Back



Comes Standard With:

- Tested to meet ANSI/ESD-STM-12.1-2013
- Back Height Adjustment
- Locking Back Tilt
- Polished Cast Aluminum Base
- Electrostatic Dissipating, dual-wheel, non-marring casters
- Black Static Dissipating heavy duty vinyl
- 300lb Weight Capacity

Additional Options

Back Styles



Large Back Chair

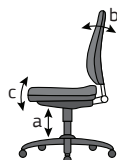
Functional Options



Glides



Arms



Seat Tilt Mech

- a) Pneumatic seat height adjustment
- b) Back angle adjustment
- c) Forward seat tilt angle

Desk Height

SESDVC100CBK

- 5" of seat height adjustment



SESDVC100CBK

Medium Bench Height

SESDVC200CBK

- 7.5" of seat height adjustment
- Chrome adjustable foot ring w/ internal lock



SESDVC200CBK

High Bench Height

SESDVC300CBK

- 9.75" of seat height adjustment
- Chrome adjustable foot ring w/ internal lock



SESDVC300CBK

SYMBIOTE

300 North Centennial Street, Zeeland, Michigan 49464
SYMBIOTE.COM | 800.283.2434